



**APPROPRIATION OF THE LANDSCAPE. Channels and crops.**

The territorial structure of the Nile Valley is divided by a network of canals that take water from the river and take a number of cultivates ordered in a characteristic pattern. The project develops this plot to take over this concept of landscape, incorporating the flow of water leading to the building and returning to their place of origin, thus closing a cycle.

**CONSTRUCTION OF CITY. New Gourma limit.**

The location of the project responds to a need to resolve the suture between the city and surrounding areas. In this sense, we value the muraria nature of the constructions of Hassan Fathy, generating external corners relation to the inhabitants. Similarly, the wall protecting the interior entrance plaza, which is related to the town becoming a wet lodge watering orange trees.

**GENERATION OF SPACE. The trapped air.**

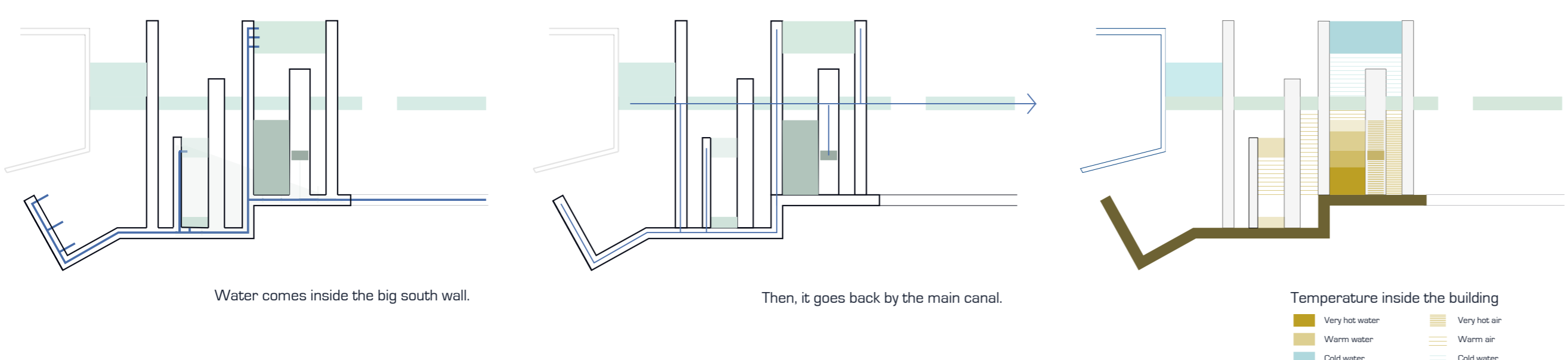
The large stone structure serves as a lintel over the walls above and defines the main body of the building. Under this cover, is generated architectural landscape unlike their plots by thermal variations, organizing the trip. Open outwards to favorable winds, inland, protected by the south wall.

**TRADITIONAL bioclimatic strategies. The wall of water.**

It is considered vital to the use of valuable solar energy in Egypt. The circulation of water along the walls and controlled exposure to sunlight facing south, can set the temperature of the spaces and the pool water. It also recovers all excess water from the circuit to be returned to its origin.

**THE CONSTRUCTION OF THE CONCEPT. Ceramics as a value.**

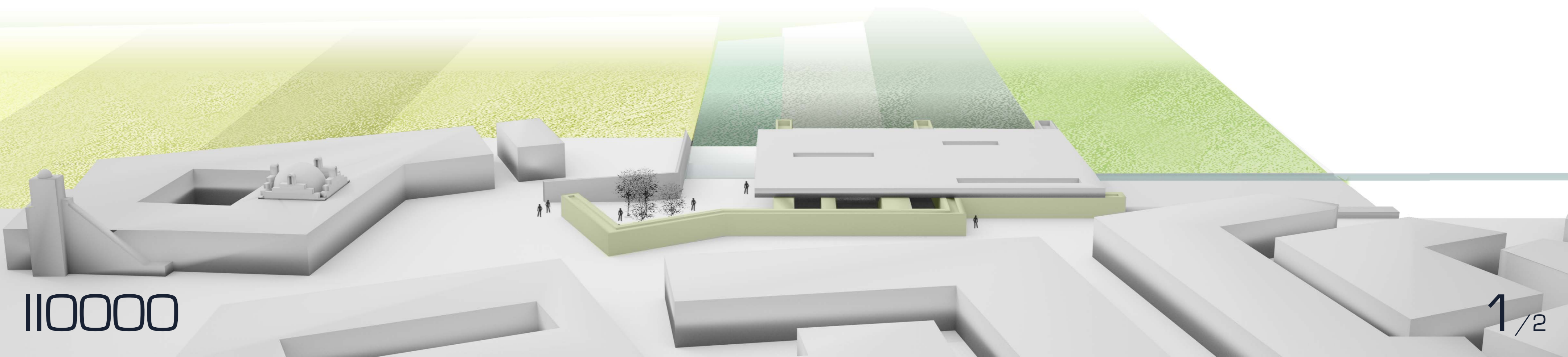
The ceramic walls are structural value, climate and space. Muraria Structures are built by walls that enclose interior spaces narrower. This thermal conditioning systems and hydraulic supply part and parcel of the same.



South Elevation

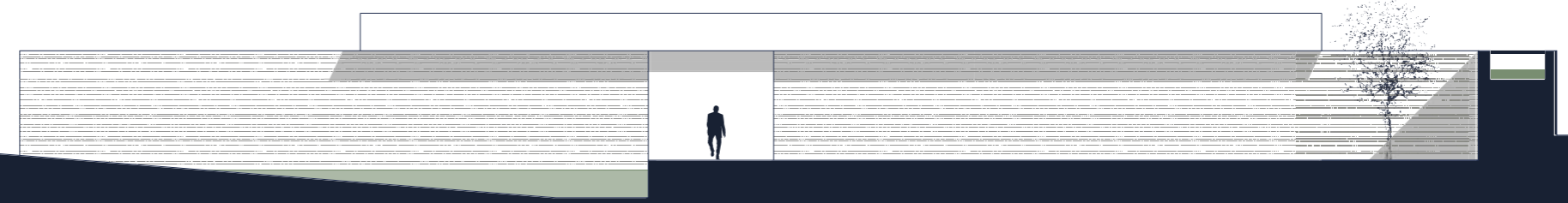


North Elevation

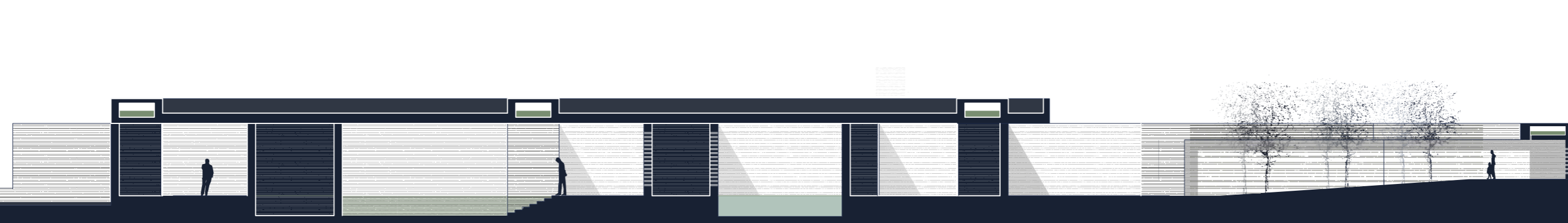




Section a



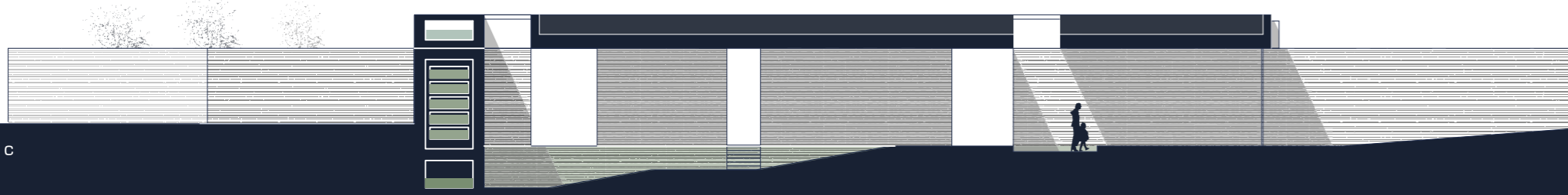
Section d



Section b



Section c



1 3 5 10