

Analysis
Nowadays more than a square, the area of intervention could be considered as a "non-place." A fragmented, chaotic and restless space. Our intention is to recover this area recovering the original vision of the space, reorganizing and adapting to new needs.

The space is divided in a strategic location in the center of the main access arteries to the city. Moreover, here match the most important focus of the city's public transport (RENFE and bus stations). In the immediate surroundings of the square, there are two different scales: a larger one, the residential buildings one, and another smaller, more suburban to the intervention, the two columns scale.

Urban Proposal
The project of the square, bus stop and the coffee-bar, will try to respond to traffic, trying to create a flow between the road and the square, while properly seeks to relate the urban spaces that precede these buildings, transforming the former continuum in a square agree with the character of the place.

Our intention is to consider into a band that makes a filter and contains both the cafe and bus stop, or other uses that need a front and are first interesting to maintain, as the bar shop, small parking zones and vending machines stations. In this way we get a clear space between the band and the stations, outside the traffic.

Taking about the volumetric relationships, the piece wants to engage with the station taking the height of the basement, the mirror backdrop and of the canopy of access.

The project involves some closed boxes, which host the service pieces and at the same time will organize covered spaces, lighter and more flexible. These spaces are covered by canopy that unifies the whole proposal. It looks as an adaptation of the horizontal shelter that Quiénes Gate introduced at these stations in 1955, smoother at the time, if we compare them with predominantly classic vaulted ones.

The proposal is based on the station, its evolution and rhythm to shape the entire program, since treatment of the square to the coffee bar and the bus stop, the parking and even the urban furniture or the alignment of vegetation.

In the southern part of the intervention, the canopy is gone, but conceptually it relates the functionality and linearity of the strip, incorporating the rest of the program.

- Legend**
1. access zone
 2. clear band next to buildings
 3. sitting area
 4. car parking
 5. bar shop
 6. bike station "tactical"
 7. clear area of stop
 8. bus stop
 9. newstand / font's
 10. coffee shop / bar
 11. sitting room
 12. play area

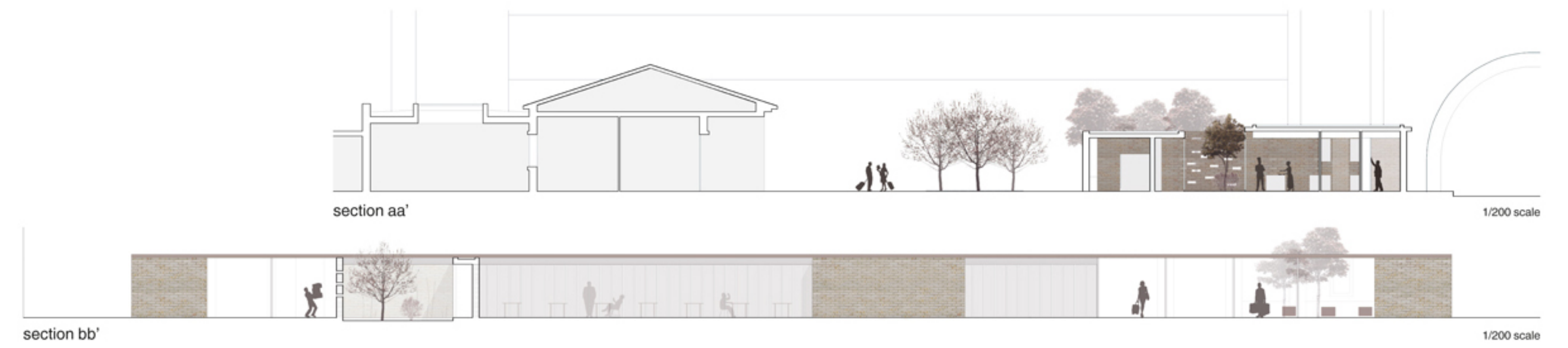


Materiality
We intend to emphasize the contrast the different character between the boxes, where are located service parts, and long areas of the coffee bar. Therefore, we decide to materialize the prism with a continuous brick wall which builds and at the same time demarcates these parts. In certain areas, like the courtyard or the office and rest area, we will use the massive image lightened by the appearance of a lattice, which makes it more permeable.

In the area of the restaurant and the coffee bar, we have decided to put ceramic tiles, a reinterpretation of the form of the brick, made by extrusion, which adapts to these dimensions in response to other current problems. This makes as a filter to the nearest road, while the side that turns into the square is faced here.

Regarding to the paving of the plaza, it should also be consistent with the brick use. Three bands, two scales and a single continuous space. The first band, which includes a cafeteria and parking area, seeks to leverage its perception as a strip. The second, of similar size, is a band close to the stations, as a prelude to the square. Finally, in the rest of the central space, it is the same, but with a larger scale.

The floor treatment consists on many cross bands of varying widths of paving lines of two different tones. The size of these bands varies depending on the number of rows that are used in each, and intends to adapt, like the rest of the proposal, to the existing building, to the stations.



- Legend**
1. newstand / font's
 2. newstand tables
 3. bus driver tables
 4. bus driver locker
 5. bus stop
 6. coffee shop/bar
 7. terrace
 8. store and service area
 9. tables
 10. sitting room / free space
 11. entry terrace
 12. entry shelter
 13. store
 14. bicycle
 15. courtyard
 16. bicycle
 17. changing room
 18. change / discharge area
 19. office
 20. employee rest area
 21. play area

